



# CONTENT

OUR STORY

---

OUR VISION AND MISSION

---

OUR APPROACH

---

PROGRAMS

---

ENROLMENT

---

ACCREDITATIONS

---



# Our Story

**The Intellect Institute**, founded in 2024 by Kevan Perumal, was established to meet the growing demand for purpose-driven, value-based education. In contrast to traditional, test-oriented teaching models focused on short-term performance, the Institute champions a **transformative approach** that prioritises long-term growth and real-world application.

Guided by the principle that knowledge should ignite consciousness, our mission is to cultivate purpose, curiosity, and responsibility in every learner.

We strive to prepare students not just for exams, but for life—empowering them to think critically, solve problems creatively, and lead with integrity. At The Intellect Institute, we aim to develop conscious contributors—individuals who recognise education as a generational investment and use their knowledge to uplift others and create meaningful change.

Our programs are designed to **inspire, transform,** and equip learners to become **future leaders,** mentors, and innovators who drive lasting impact in their communities and beyond.



# Our Vision and Mission

The Intellect Institute's **mission** is to deliver purpose-driven education that empowers individuals to think critically, lead ethically, and impact society. We **envision** a world where learning sparks consciousness and creates lifelong, community-minded change makers.

## 01

We believe **diversity** enriches learning and drives innovation. By championing equity and inclusion, we create spaces where everyone feels valued, respected, and empowered to thrive.

## 02

**Excellence** is at the heart of The Intellect Institute's ethos. We strive to exceed expectations through academic, professional, and ethical distinction in all that we do.

## 03

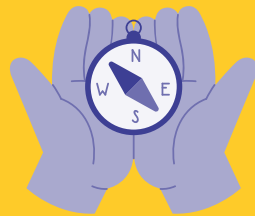
**Integrity** guides every aspect of our work at The Intellect Institute. Grounded in transparency and respect, we are committed to consistently doing what is right.

# Our Approach

The Intellect Institute's teaching approach is grounded in **four interconnected pillars** that together create a holistic, purpose-driven model—designed to transform learners into conscious, empowered contributors.

## Purpose-Led Learning

We begin with *why*—every lesson is intentionally designed to connect academic content to real-world challenges and personal relevance. This approach helps learners develop a clear sense of direction, grounding their education in values, meaning, and long-term purpose.



## Critical Thinking Over Rote Learning

Instead of memorising facts, students are encouraged to question, analyse, and reflect. Through open dialogue, problem-solving, and case-based learning, we foster independent thought, adaptability, and intellectual curiosity—skills essential for navigating an ever-changing world.



## Experiential & Collaborative Learning

Learning is active and participatory. We incorporate hands-on projects, group discussions, peer-led initiatives, and real-world engagement. This fosters teamwork, leadership, and practical application—bridging the gap between theory and practice.



## Generational Impact

We view education as a legacy, not a transaction. Our goal is to shape learners who don't just grow personally, but who also invest in others—becoming future mentors, educators, and changemakers who uplift communities and contribute to generational progress.



# Programmes



Learning is active and participatory. We incorporate hands-on projects, group discussions, peer-led initiatives, and real-world



Learning is active and participatory. We incorporate hands-on projects, group discussions, peer-led initiatives, and real-world



Learning is active and participatory. We incorporate hands-on projects, group discussions, peer-led initiatives, and real-world



Learning is active and participatory. We incorporate hands-on projects, group discussions, peer-led initiatives, and real-world



Learning is active and participatory. We incorporate hands-on projects, group discussions, peer-led initiatives, and real-world



Learning is active and participatory. We incorporate hands-on projects, group discussions, peer-led initiatives, and real-world



## Mind map

Exploring creativity



# Programmes



Learning is active and participatory. We incorporate hands-on projects, group discussions, peer-led initiatives, and real-world



Learning is active and participatory. We incorporate hands-on projects, group discussions, peer-led initiatives, and real-world



Learning is active and participatory. We incorporate hands-on projects, group discussions, peer-led initiatives, and real-world



Learning is active and participatory. We incorporate hands-on projects, group discussions, peer-led initiatives, and real-world



Learning is active and participatory. We incorporate hands-on projects, group discussions, peer-led initiatives, and real-world



Learning is active and participatory. We incorporate hands-on projects, group discussions, peer-led initiatives, and real-world



## Mind map

Exploring creativity



# Enrolment

Enrolment at The Intellect Institute begins with understanding each learner's journey and aspirations. We believe in a personalised, purpose-driven approach that ensures students are not only academically prepared but aligned with our values and vision. From initial interest to onboarding, our process is designed to be clear, supportive, and student-focused every step of the way.

## "From Application to Impact"



# Accreditations

Enrolment at The Intellect Institute begins with understanding each learner's journey and aspirations. We believe in a personalised, purpose-driven approach that ensures students are not only academically prepared but aligned with our values and vision. From initial interest to onboarding, our process is designed to be clear, supportive, and student-focused every step of the way.

## WE ARE PROUD TO BE:



CENTRAL SUPPLIER  
**DATABASE**  
FOR GOVERNMENT



Companies and Intellectual  
Property Commission  
a member of **the dti** group



**SABPP**<sup>TM</sup>  
SA BOARD FOR  
PEOPLE PRACTICES  
*Setting HR standards*



# THE INTELLECT INSTITUTE

BEYOND EDUCATION, TOWARDS PERSONAL MASTERY

 The Intellect Institute  
 theintellectinstitute  
 the-intellect-institute

012 655 0205  
300 Witch Hazel Ave  
Block B Unit B14,  
Eco Fusion 4  
Centurion, 0157  
kevan@intellectinstitute.co.za  
www.theintellectinstitute.co.za